



# CHICO OAKS REALTY

PHILADELPHIA SQUARE  
10 DECLARATION DR., SUITE E  
CHICO, CALIFORNIA 95973

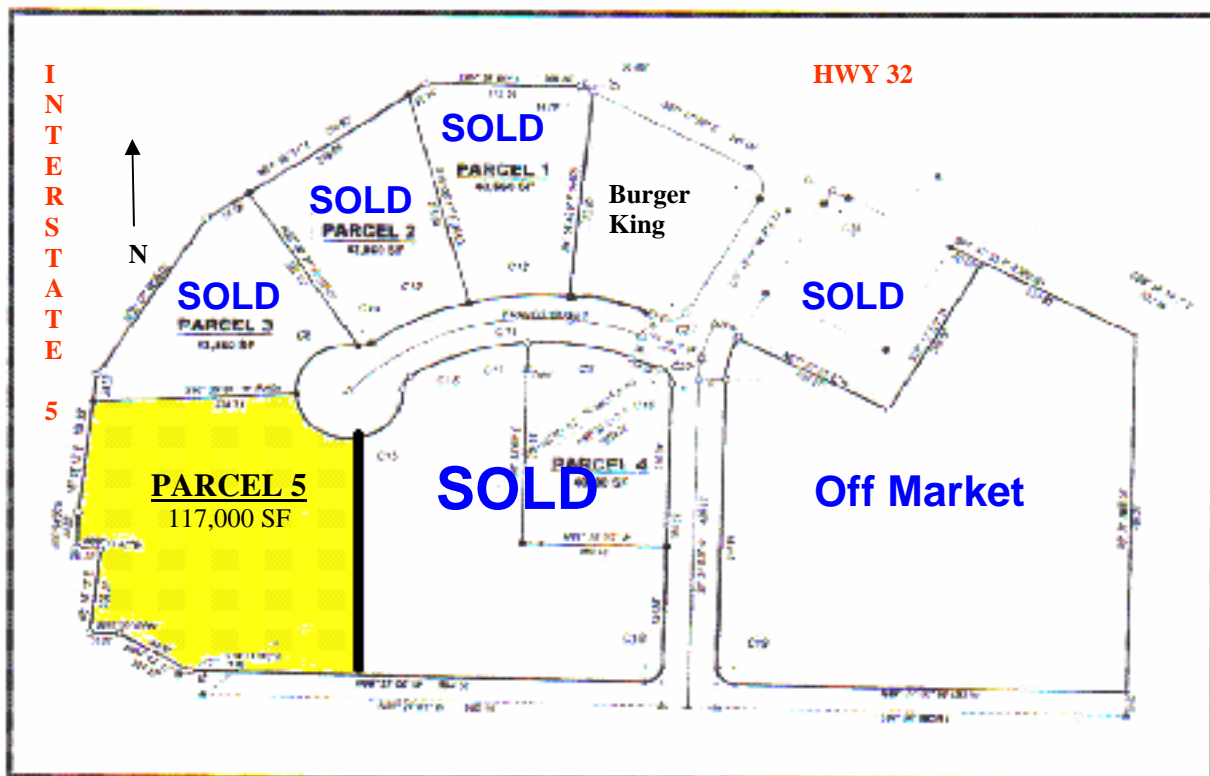
**FOR SALE- GROUND LEASE-BUILD TO SUIT**

## **ORLAND-Hwy Commercial**

**20 Miles West of Chico**

**North/South Hwy 5 & East/West Hwy 32**

**with all on/off ramps**



**Parcel 5-117,000 SF- Priced at \$9.00 SF or \$1,053,000.00**

Prime location for a restaurant, hotel or fast food.

Gateway to Chico from Hwy 5 to Hwy 32.

This parcel serviced by city sewer and water. Storm drain has been installed.

The information contained herein has been obtained from sources we deem reliable. We cannot, however, assume responsibility for its accuracy.  
For more properties, visit our web-site at: [chicooaksrealty.com](http://chicooaksrealty.com)

COMMERCIAL DEVELOPMENT • COMMERCIAL MANAGEMENT • INVESTMENT COUSELING • EXCHANGE COUNSELING

OFFICE (530)896-1941

RESIDENCE (530)893-5919

FAX (530)896-1933

This document was created with Win2PDF available at <http://www.win2pdf.com>.  
The unregistered version of Win2PDF is for evaluation or non-commercial use only.